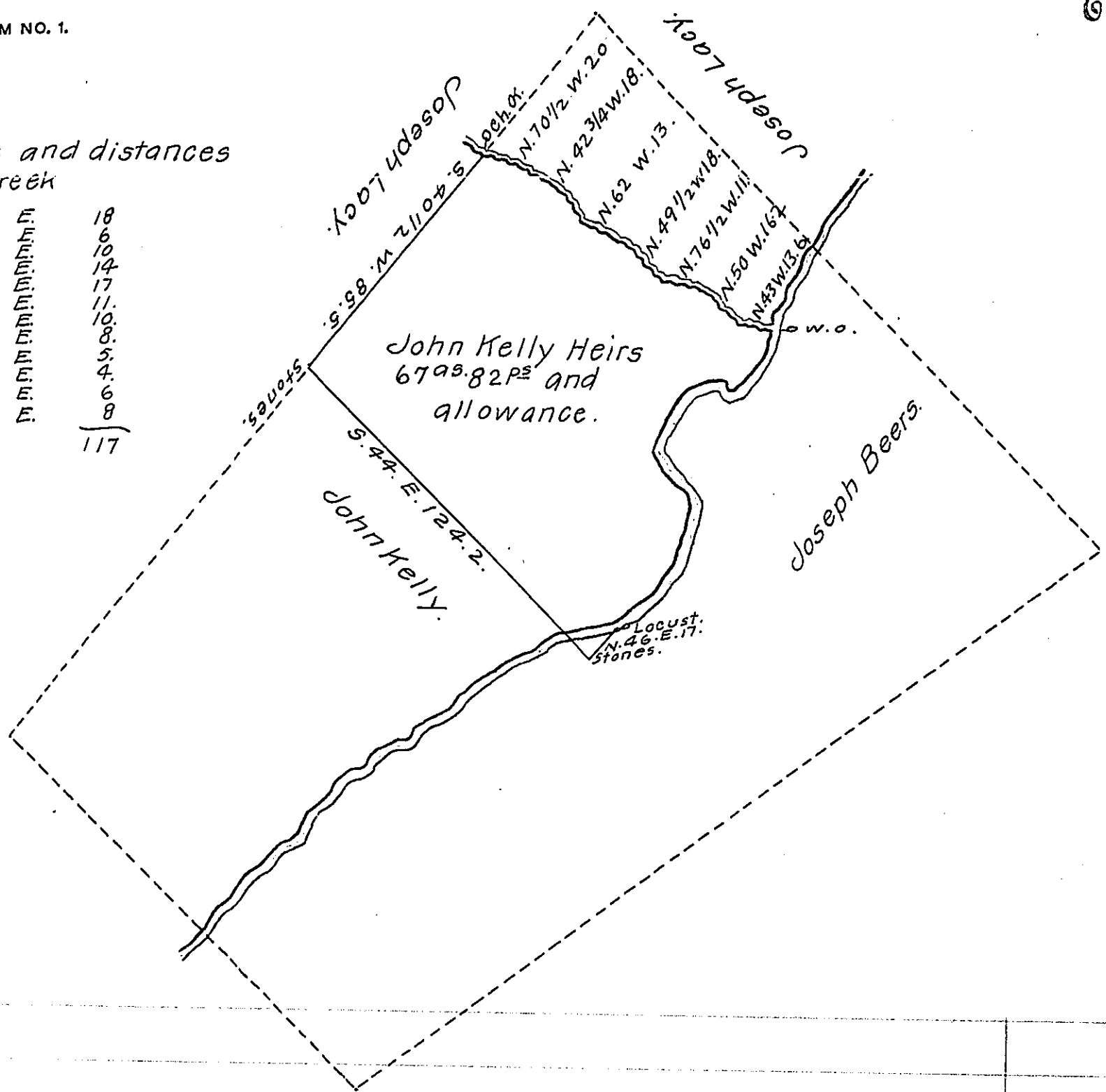


Courses and distances
down Creek

N. 52 1/2	E.	18
N. 39 1/4	E.	6
N. 21	E.	10
N. 5 1/4	E.	14
N. 40	E.	17
N. 27	E.	11
N. 28	E.	10
N. 77	E.	8
S. 40	E.	5
N. 66 3/4	E.	4
N. 42 3/4	E.	6
N. 31.	E.	8
		<hr/>
		117



Draught of a tract of land Situate in Toboyne Township
Perry County Containing 67^{as} 82 perches and allowance
of six percent for roads &c. it being part of 313^{as} Surveyed
August 28th, 1766, on a warrant granted to John Thomas dated August 10th.
1765 Surveyed the above part for Patenting for John Kelley Heirs
June 10th, 1854.

To J. Porter Brawley, Esqr., James Woods, C.S.
Surveyor General of Penna.

IN TESTIMONY that the above is a copy of the original remaining on file in
the Department of Internal Affairs of Pennsylvania, made
conformably to an Act of Assembly approved the 16th day of
February, 1833, I have hereunto set my Hand and caused
the Seal of said Department to be affixed at Harrisburg,
this twenty seventh day of May, 1914.

Henry Howell
Secretary of Internal Affairs.